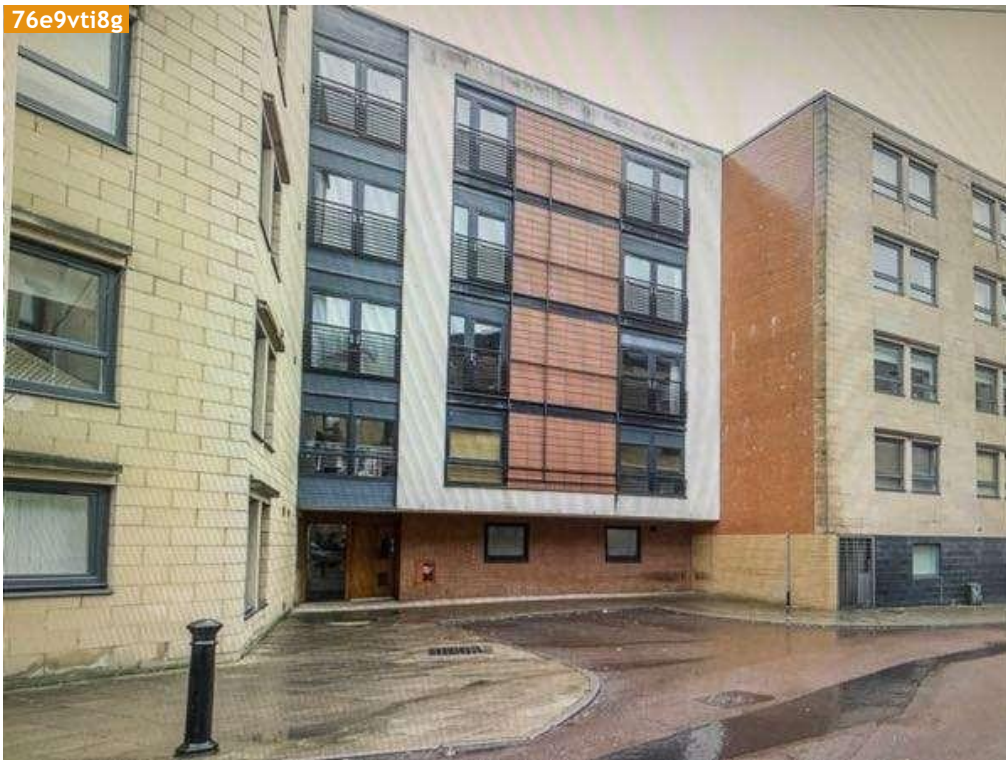




AVJ Homes
279 Castlemilk Road
Glasgow
Scotland
G44 4LE

0141 649 3948
sales@avjhomes.com
<http://www.avjhomes.com/>

Check out Report



Prepared by:

AVJ Homes

Report date:

Table of Contents

Guidance Notes	3
Tenant details.....	4
Schedule of condition.....	4
Utilities	5
Keys received from tenants	5
Keys handed to the tenants	6
Damage issues.....	7
Maintenance issues.....	8
Cleanliness issues.....	9
Entrance and Hallway.....	10 - 20
Kitchen	21 - 42
Bathroom.....	43 - 62
Lounge	63 - 87
Master Bedroom.....	88 - 111
parking bays	112
Terms and conditions.....	113
Disclaimer.....	114
Tenant Declaration.....	115

Tenant guidelines for inspections

Check in inspection

Before you sign the declaration ensure that you are happy with all the statements made in the inventory. If there are any issues you must inform the check in clerk at the time, so that it can be recorded on the report. The condition of items and rooms are deemed to be clean, undamaged and fit for purpose unless otherwise stated in the inventory. You will receive a full copy of the inventory to keep. You must refer to the inventory at check out time, so keep it in a safe place.

At Mid term inspection

If a midterm inspection has been booked, you will be informed of the date in writing and will be expected to allow a clerk to enter the property to carry out the inspection. At this point you must inform the clerk of any damage or maintenance issues with the property so they can be dealt with.

At Check out inspection

It will be expected for the property and its contents to be returned to the condition and location at check in - use the inventory as a guide. Any items missing from location may be deemed lost / broken and charged for.

Tenant details

Tenant name:	-	Moved in date	-
--------------	---	---------------	---

Schedule of condition

	Move in	Move out
Overall interior condition	-	Good
Overall decoration condition	-	Good
Overall woodwork condition	-	Good
Overall cleanliness condition	-	Fair
Overall flooring condition	-	Good
Overall bathroom(s) condition	-	Fair
Overall kitchen and appliances condition	-	Fair
Overall exterior condition	-	Good
Overall furniture and furnishings condition	-	Good

Move out notes

No smoke detector in lounge

Kitchen heat detector taken down

Has left microwave

There is a crack in the bathroom tiled flooring

Property needs deep clean

Utilities

	Electricity	Gas	Water
In property?	Yes	-	-
Meter location	Bedroom fitted wardrobe	-	-
Meter reading	02779 / 00580	-	-
Keycard	No	-	-
Serial number	2106P03329	-	-

07-09-2022 12:03 / Electricity_photo / G205y8nx0



07-09-2022 12:04 / Electricity_photo / Lxi24aabu



Keys received from tenants

Key type	Quantity and lock type

Keys handed to the tenants continued

07-09-2022 10:51 / Keys Photo / U0ry90tpb



Damage issues for

	Room / Item	Responsibility	Notes
1	Lounge / Dining chair	-	Good condition / Chairs are extremely worn

Maintenance issues for

	Room / Item	Trade required	Notes
1	Bedroom / Juliet doors	-	Doors do not open and close properly

Cleanliness issues for

	Room / Item	Notes
1	Bathroom / Bathroom cabinet	Good condition / Reds finishing clean
2	Bathroom / Toilet	Good condition and domestically clean / Toilet needs cleaned
3	Bathroom / Bath inc shower	Good condition and domestically clean / Dusty and needs cleaned. Ran my finger across so you can see
4	Kitchen / Hob	Fair wear and tear and domestically clean / Needs wipe down
5	Kitchen / Single oven	Not tested / Needs cleaned
6	Kitchen / Cooker hood	Not tested / Thick with grease, I cleaned a small circle to show the difference
7	Kitchen / Fridge freezer	Not tested / Needs cleaned
8	Kitchen / Bin	Good condition and domestically clean / Mouldy

Entrance and Hallway

Cupboard

IN: -

OUT:



MOVE IN



MOVE IN

07-09-2022 10:37 / Cupboard / 4z9f6eewk



MOVE OUT

07-09-2022 10:37 / Cupboard / Jbwbltuys



MOVE OUT

Front door

IN: Good condition

OUT: Good condition



MOVE IN



MOVE IN

Entrance and Hallway continued



Ceiling

IN: Good condition

OUT: Good condition



Walls

IN: Good condition

OUT: Good condition

Entrance and Hallway continued



Woodwork

IN: Good condition

OUT: Good condition

Entrance and Hallway continued

13-09-2021 / Woodwork / Ocwk3pids



MOVE IN

07-09-2022 10:39 / Woodwork / 4f3065l4t



MOVE OUT

Floor

IN: Good condition

OUT: Good condition

13-09-2021 / Floor / 1emf9kw5k



MOVE IN

Entrance and Hallway continued



Mirror

IN: Good condition and domestically clean OUT: Good condition and domestically clean



Light switch

IN: In working order

OUT: In working order

Entrance and Hallway continued

13-09-2021 / Light Switch / Mjknljpxl



MOVE IN

07-09-2022 10:39 / Light Switch / 8vqo235ms



MOVE OUT

Lighting

IN: Some not working

OUT: Some not working

13-09-2021 / Lighting / Tpqd1bpdw



MOVE IN

Entrance and Hallway continued



Socket

IN: Not tested or examined

OUT: Not tested or examined



Smoke detector

IN: -

OUT:

Entrance and Hallway continued



Heating

IN: Not examined or tested

OUT: Not examined or tested



Entrance and Hallway continued

07-09-2022 10:40 / Heating / Cd8icnwev



MOVE OUT

Thermostat

IN: Not examined or tested

OUT: Not examined or tested

13-09-2021 / Thermostat / 2r9yqwcf



MOVE IN

07-09-2022 10:40 / Thermostat / Lam7vvs41



MOVE OUT

Coat hook

IN: Good condition

OUT: Good condition

Entrance and Hallway continued

13-09-2021 / Coat Hook / 7z8g975ld



MOVE IN

13-09-2021 / Coat Hook / Sp2zgf9w



MOVE IN

07-09-2022 10:40 / Coat Hook / 1zscw4vmz



MOVE OUT

Voice intercom

IN: Not tested

OUT: Not tested

13-09-2021 / Voice Intercom / 01ufw72zh



MOVE IN

13-09-2021 / Voice Intercom / Rloovqqvo



MOVE IN

Entrance and Hallway continued

07-09-2022 10:40 / Voice Intercom / Ohjvd036u



MOVE OUT

Kitchen

Ceiling

IN: Good condition

OUT: Good condition

13-09-2021 / Ceiling / 1iec3kftg



MOVE IN

13-09-2021 / Ceiling / 1oz0vpu8k



MOVE IN

07-09-2022 11:46 / Ceiling / 9pbtv29ok



MOVE OUT

07-09-2022 11:47 / Ceiling / Bg2duerej



MOVE OUT

Walls

IN: Good condition

OUT: Good condition

13-09-2021 / Walls / lfe1mgrun



MOVE IN

13-09-2021 / Walls / T7i3ht2o4



MOVE IN

Kitchen continued

13-09-2021 / Walls / Lc2yorwky



MOVE IN

13-09-2021 / Walls / K0lrakr0f



MOVE IN

13-09-2021 / Walls / Lq77cnvkc



MOVE IN

07-09-2022 11:56 / Walls / Q474ii3wr



MOVE OUT

07-09-2022 11:57 / Walls / J7h9ljabr



MOVE OUT

Kitchen continued



Woodwork

IN: Good condition

OUT: Good condition



Floor

IN: Good condition and domestically clean

OUT: Good condition and domestically clean

Kitchen continued

13-09-2021 / Floor / 7yptk86jw



MOVE IN

13-09-2021 / Floor / 87rjb3qs4



MOVE IN

07-09-2022 11:57 / Floor / 90uai091q



MOVE OUT

07-09-2022 11:57 / Floor / Ex8qy770m



MOVE OUT

07-09-2022 11:57 / Floor / 7e4a4blcv



MOVE OUT

Heat Detector

IN: Not tested

OUT: Not tested

Kitchen continued

13-09-2021 / Heat Detector / P2wp5im5h



MOVE IN

07-09-2022 11:47 / Heat Detector / Awqvd18c



MOVE OUT

07-09-2022 11:47 / Heat Detector / 6zz4jqohm



MOVE OUT

07-09-2022 11:47 / Heat Detector / H0fv49qse



MOVE OUT

Light switch

IN: In working order

OUT: In working order

Kitchen continued



MOVE IN



MOVE OUT

Lighting

IN: In working order

OUT: In working order



MOVE IN

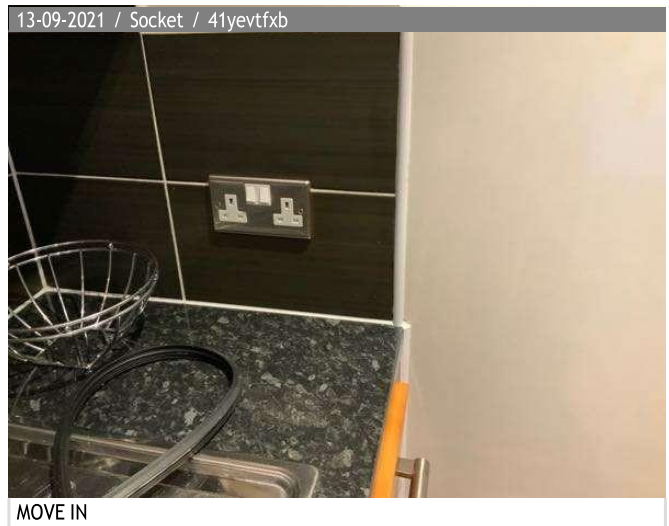
Kitchen continued



Socket

IN: Not examined or tested

OUT: Not examined or tested



Kitchen continued



Kitchen units

IN: Good condition and domestically clean OUT: Good condition and domestically clean



Kitchen continued

13-09-2021 / Kitchen Units / Sxfcf5ys3



MOVE IN

13-09-2021 / Kitchen Units / Rjhohvt6i



MOVE IN

13-09-2021 / Kitchen Units / 23b7oeqoa



MOVE IN

13-09-2021 / Kitchen Units / Uno7k9cdg



MOVE IN

13-09-2021 / Kitchen Units / S2hk3k6g5



MOVE IN

13-09-2021 / Kitchen Units / V0odnvrii



MOVE IN

Kitchen continued

13-09-2021 / Kitchen Units / D9vag30tl



MOVE IN

07-09-2022 12:00 / Kitchen Units / Oty28dudw



MOVE OUT

07-09-2022 11:59 / Kitchen Units / Jac9v9qh3



MOVE OUT

07-09-2022 11:59 / Kitchen Units / 2i3xm3vzf



MOVE OUT

07-09-2022 12:00 / Kitchen Units / Di1tpy8xg



MOVE OUT

Kitchen continued



Sink

IN: In working order

OUT: In working order

Kitchen continued

13-09-2021 / Sink / Pspe08np2



MOVE IN

13-09-2021 / Sink / 87poey2v



MOVE IN

07-09-2022 11:58 / Sink / 99hpnqmd



MOVE OUT

07-09-2022 11:58 / Sink / Smj3bal



MOVE OUT

Worktops

IN: Good condition but not cleaned

OUT: Good condition but not cleaned

13-09-2021 / Worktops / Na3tnavq



MOVE IN

13-09-2021 / Worktops / 24djtr9y



MOVE IN

Kitchen continued



Bin

IN: Good condition and domestically clean OUT: Good condition and domestically clean



Kitchen continued

07-09-2022 11:55 / Bin / I9l6amige



MOVE OUT

07-09-2022 11:55 / Bin / Myprakkvr



MOVE OUT

07-09-2022 11:55 / Bin / 2o55krp1c



MOVE OUT

07-09-2022 11:55 / Bin / Xviwglh1q



MOVE OUT

07-09-2022 11:56 / Bin / 4jwahn7sv / CLEANING



MOVE OUT

07-09-2022 11:56 / Bin / 23ci7rkab / CLEANING



MOVE OUT

Kitchen continued



Cooker hood

IN: Not tested

OUT: Not tested



Kitchen continued



Dishwasher

IN: Not tested

OUT: Not tested



Kitchen continued



Fridge freezer

IN: Not tested

OUT: Not tested



Kitchen continued

07-09-2022 11:50 / Fridge Freezer / 05h4hxomb



MOVE OUT

07-09-2022 11:51 / Fridge Freezer / Tvbklse6 / CLEANING



MOVE OUT

07-09-2022 11:51 / Fridge Freezer / Na2nbkj6x / CLEANING



MOVE OUT

07-09-2022 11:51 / Fridge Freezer / 1eiph1h8b / CLEANING



MOVE OUT

07-09-2022 11:51 / Fridge Freezer / Yulta6xm7 / CLEANING



MOVE OUT

Hob

IN: Fair wear and tear and domestically clean

OUT: Fair wear and tear and domestically clean

Kitchen continued



Single oven

IN: Not tested

OUT: Not tested



Kitchen continued

13-09-2021 / Single Oven / 3qhe5d5da



MOVE IN

07-09-2022 11:48 / Single Oven / Tkr9g7ixk / CLEANING



MOVE OUT

07-09-2022 11:48 / Single Oven / A1vbpaqng / CLEANING



MOVE OUT

07-09-2022 11:49 / Single Oven / Vybt1e1qe / CLEANING



MOVE OUT

07-09-2022 11:49 / Single Oven / Eujxknlh8 / CLEANING



MOVE OUT

Kitchen continued



Washer dryer

IN: Needs cleaning

OUT: Needs cleaning



Kitchen continued



MOVE IN



MOVE IN Cloths and dish towels left in washing machine



MOVE OUT



MOVE OUT



MOVE OUT



MOVE OUT

Bathroom

Internal door

IN: Good condition

OUT: Good condition



Ceiling

IN: Good condition

OUT: Good condition



Bathroom continued



Walls

IN: Good condition and domestically clean OUT: Good condition and domestically clean



Bathroom continued



Bathroom continued



Floor

IN: Good condition and domestically clean OUT: Good condition and domestically clean



Bathroom continued

07-09-2022 10:52 / Floor / Drc0dc0lu



MOVE OUT

07-09-2022 10:52 / Floor / Aqqu0zxb9



MOVE OUT

07-09-2022 10:52 / Floor / 9s43e7500



MOVE OUT

07-09-2022 10:52 / Floor / Plbmdsku8



MOVE OUT

07-09-2022 10:53 / Floor / Cfcqrw50 / MAINTENANCE



MOVE OUT Crack on one of the tiles on the bathroom floor

07-09-2022 10:52 / Floor / A9kc3wm7s



MOVE OUT

Extractor fan

IN: Not examined or tested

OUT: Not examined or tested

Bathroom continued



Light switch

IN: In working order

OUT: In working order



Bathroom continued

07-09-2022 10:48 / Light Switch / Sdpzprm55



MOVE OUT

Walk in shower

IN: Good condition and domestically clean OUT: Good condition and domestically clean

13-09-2021 / Walk In Shower / 4vwdcx4lk



MOVE IN

13-09-2021 / Walk In Shower / Sbo2grago



MOVE IN

13-09-2021 / Walk In Shower / Wwe272oka



MOVE IN

Bathroom continued



Hand basin

IN: Good condition and domestically clean OUT: Good condition and domestically clean



Bathroom continued

13-09-2021 / Hand Basin / 5vz0gtopb



MOVE IN

13-09-2021 / Hand Basin / Jtkgo1hun



MOVE IN

13-09-2021 / Hand Basin / 2pc7hg6ot



MOVE IN Purple stain inside bottom drawer

07-09-2022 10:43 / Hand Basin / G1x76imyy



MOVE OUT

07-09-2022 10:43 / Hand Basin / 84ivbh9b8



MOVE OUT

Bathroom continued

07-09-2022 10:43 / Hand Basin / 2ojfi5qj4



MOVE OUT

Toilet

IN: Good condition and domestically clean OUT: Good condition and domestically clean

13-09-2021 / Toilet / Rly9zx4fk



MOVE IN

13-09-2021 / Toilet / W0x6m760f



MOVE IN

07-09-2022 10:46 / Toilet / llmlr5jtw



MOVE OUT

07-09-2022 10:46 / Toilet / E8w45ibxm



MOVE OUT

Bathroom continued



Bath inc shower

IN: Good condition and domestically clean OUT: Good condition and domestically clean



Bathroom continued

13-09-2021 / Bath Inc Shower / Rnhql0eie



MOVE IN

13-09-2021 / Bath Inc Shower / Z0jmnici



MOVE IN

07-09-2022 10:46 / Bath Inc Shower / H9j1ewyb5



MOVE OUT

07-09-2022 10:46 / Bath Inc Shower / 8wf9tmeoi



MOVE OUT

07-09-2022 10:46 / Bath Inc Shower / Dyx61dab9



MOVE OUT

07-09-2022 10:46 / Bath Inc Shower / Ef07gdib6



MOVE OUT

Bathroom continued

07-09-2022 12:02 / Bath Inc Shower / Knpqqtu03 / CLEANING



MOVE OUT

Lighting

IN: In working order

OUT: In working order

13-09-2021 / Lighting / Hqw0yo8m5



MOVE IN

07-09-2022 10:45 / Lighting / Br4kg1gub



MOVE OUT

Shaver socket

IN: Not examined or tested

OUT: Not examined or tested

Bathroom continued

13-09-2021 / Shaver Socket / Tg79wzp3e



MOVE IN

07-09-2022 10:43 / Shaver Socket / Fru161tvf



MOVE OUT

Heating

IN: Not examined or tested

OUT: Not examined or tested

13-09-2021 / Heating / N6zuls41b



MOVE IN

Bathroom continued



Integrated speakers

IN: Not tested

OUT: Not tested



Shelf

IN: Good condition

OUT: Good condition

Bathroom continued



Toilet Roll Holder

IN: Good condition

OUT: Good condition



Bathroom continued



Towel Rail

IN: Good condition

OUT: Good condition



Wall hooks

IN: Good condition

OUT: Good condition

Bathroom continued

13-09-2021 / Wall Hooks / 6emzp21jy



MOVE IN

13-09-2021 / Wall Hooks / 972st1cwe



MOVE IN

07-09-2022 10:44 / Wall Hooks / Uuusojcry



MOVE OUT

07-09-2022 10:44 / Wall Hooks / Zv84zitim



MOVE OUT

07-09-2022 10:44 / Wall Hooks / Pa36c94wv



MOVE OUT

Bathroom cabinet

IN: Good condition

OUT: Good condition

Bathroom continued

13-09-2021 / Bathroom Cabinet / Bfe8illql



MOVE IN

13-09-2021 / Bathroom Cabinet / Fepjn2civ



MOVE IN

13-09-2021 / Bathroom Cabinet / T4p2d5h2c



MOVE IN

07-09-2022 10:41 / Bathroom Cabinet / Wmgan9hh1



MOVE OUT

07-09-2022 10:42 / Bathroom Cabinet / Mo63nx0rq / CLEANING



MOVE OUT

Bathroom continued



Lounge

Cupboard

IN: -

OUT:



Internal door

IN: Good condition

OUT: Good condition

Lounge continued

13-09-2021 / Internal Door / Pmq29al8q



MOVE IN

07-09-2022 11:28 / Internal Door / 55mx4rdeg



MOVE OUT

Window

IN: Good condition and domestically clean OUT: Good condition and domestically clean

13-09-2021 / Window / 8s2smx4e9



MOVE IN

13-09-2021 / Window / U2tz2ctt8



MOVE IN

Lounge continued



MOVE OUT



MOVE OUT

Ceiling

IN: Good condition

OUT: Good condition



MOVE IN



MOVE IN



MOVE OUT



MOVE OUT

Walls

IN: Good condition

OUT: Good condition

Lounge continued

13-09-2021 / Walls / Shlpws4mm



MOVE IN

13-09-2021 / Walls / Q82xsing



MOVE IN

13-09-2021 / Walls / Q2i9e0am2



MOVE IN

13-09-2021 / Walls / V1brtb9u2



MOVE IN

13-09-2021 / Walls / Q2p0kc085



MOVE IN

Lounge continued

07-09-2022 11:29 / Walls / C85565kv7



MOVE OUT

07-09-2022 11:29 / Walls / Ra3ms9dtj



MOVE OUT

07-09-2022 11:29 / Walls / 2mj80juxp



MOVE OUT

07-09-2022 11:29 / Walls / Aa082vpct



MOVE OUT

07-09-2022 11:29 / Walls / looqgsimn



MOVE OUT

Woodwork

IN: Good condition

OUT: Good condition

Lounge continued

13-09-2021 / Woodwork / Yxskrmjaj



MOVE IN

07-09-2022 11:29 / Woodwork / 7c0aw6alr



MOVE OUT

Floor

IN: Good condition and domestically clean OUT: Good condition and domestically clean

13-09-2021 / Floor / Fxo7gq3fs



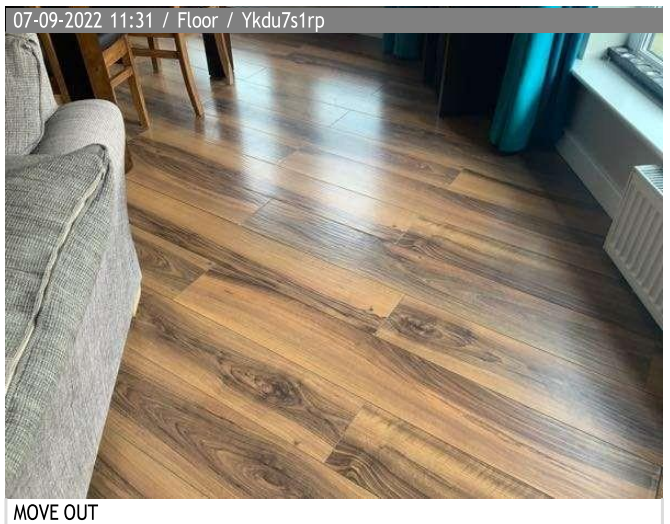
MOVE IN

13-09-2021 / Floor / 5bkw2eg0u



MOVE IN

Lounge continued



Lounge continued

07-09-2022 11:31 / Floor / Rl8zaqezs



MOVE OUT

07-09-2022 11:31 / Floor / 1g6o3q75j



MOVE OUT

07-09-2022 11:31 / Floor / E711oqh97



MOVE OUT

07-09-2022 11:31 / Floor / Mtt8kcxdb



MOVE OUT

07-09-2022 11:31 / Floor / 734xep4xq



MOVE OUT

07-09-2022 11:31 / Floor / C10ttlwie



MOVE OUT

Breakfast bar

IN: Good condition

OUT: Good condition

Lounge continued

13-09-2021 / Breakfast Bar / 1n8plihxw



MOVE IN

13-09-2021 / Breakfast Bar / Wdqbbouow



MOVE IN

07-09-2022 11:32 / Breakfast Bar / K2l7dpeqp



MOVE OUT

Mirror

IN: Good condition and domestically clean OUT: Good condition and domestically clean

13-09-2021 / Mirror / Qljp0ngv1



MOVE IN

Lounge continued



Light switch

IN: In working order

OUT: In working order



Lighting

IN: In working order

OUT: In working order

Lounge continued

13-09-2021 / Lighting / Dva5p9atj



MOVE IN

13-09-2021 / Lighting / Hxfjmf2kh



MOVE IN

13-09-2021 / Lighting / K3sz8uc23



MOVE IN

07-09-2022 11:29 / Lighting / Bd3q0j14f



MOVE OUT

07-09-2022 11:29 / Lighting / 0kq0a2xjz



MOVE OUT

Socket

IN: Not examined or tested

OUT: Not examined or tested

Lounge continued

13-09-2021 / Socket / Faeitnca3



MOVE IN

13-09-2021 / Socket / Tf7oofsrđ



MOVE IN

07-09-2022 11:32 / Socket / 3v06m9c8g



MOVE OUT

07-09-2022 11:33 / Socket / Pr587f6p8



MOVE OUT

07-09-2022 11:32 / Socket / Zgur4ucus



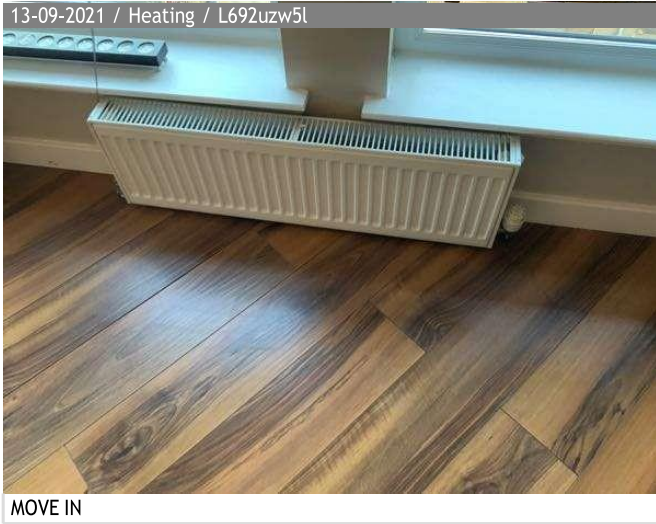
MOVE OUT

Heating

IN: Not examined or tested

OUT: Not examined or tested

Lounge continued



Window furnishings

IN: Good condition and domestically clean OUT: Good condition and domestically clean



Lounge continued



lamp

IN: Good condition

OUT: Good condition



2 seater sofa

IN: Good condition

OUT: Good condition

Lounge continued

13-09-2021 / 2 Seater Sofa / 08u9hp8s4



MOVE IN

13-09-2021 / 2 Seater Sofa / Kmp50jaqb



MOVE IN

07-09-2022 11:36 / 2 Seater Sofa / Jrw2wwx4s



MOVE OUT

07-09-2022 11:36 / 2 Seater Sofa / 2txqoea14



MOVE OUT

Bar stool

IN: Good condition

OUT: Good condition

13-09-2021 / Bar Stool / Vcntqcl3e



MOVE IN

Lounge continued



candle holder

IN: Good condition

OUT: Good condition



Dining chair

IN: Good condition

OUT: Good condition

Lounge continued

13-09-2021 / Dining Chair / Jbws2wkhi



MOVE IN

13-09-2021 / Dining Chair / Krljhixiq



MOVE IN

13-09-2021 / Dining Chair / Vmurylqvc



MOVE IN

07-09-2022 11:39 / Dining Chair / P04r4vynp / DAMAGE



MOVE OUT

07-09-2022 11:39 / Dining Chair / Zcb3ivv9n / DAMAGE



MOVE OUT

Lounge continued

07-09-2022 11:38 / Dining Chair /
5nc4tvujg / DAMAGE



MOVE OUT

07-09-2022 11:38 / Dining Chair /
Z89sagkri / DAMAGE



MOVE OUT

07-09-2022 11:38 / Dining Chair /
570m6441b / DAMAGE



MOVE OUT

07-09-2022 11:38 / Dining Chair / I8l16ql7o / DAMAGE



MOVE OUT

07-09-2022 11:38 / Dining Chair /
I0yxhlqub / DAMAGE



MOVE OUT

07-09-2022 11:38 / Dining Chair / Zre3ads03 / DAMAGE



MOVE OUT

Lounge continued

07-09-2022 11:38 / Dining Chair / Smtnw6qn3 / DAMAGE



MOVE OUT

07-09-2022 11:39 / Dining Chair / Sfgk8fba7 / DAMAGE



MOVE OUT

Dining table

IN: Good condition and domestically clean OUT: Good condition and domestically clean

13-09-2021 / Dining Table / Pujfymg9w



MOVE IN

07-09-2022 11:40 / Dining Table / Gokp4d6xf



MOVE OUT

07-09-2022 11:39 / Dining Table / Rvjth0u0q



MOVE OUT

Shelving unit

IN: Good condition

OUT: Good condition

Lounge continued



Side table

IN: Good condition

OUT: Good condition

Lounge continued

13-09-2021 / Side Table / Copw8innr



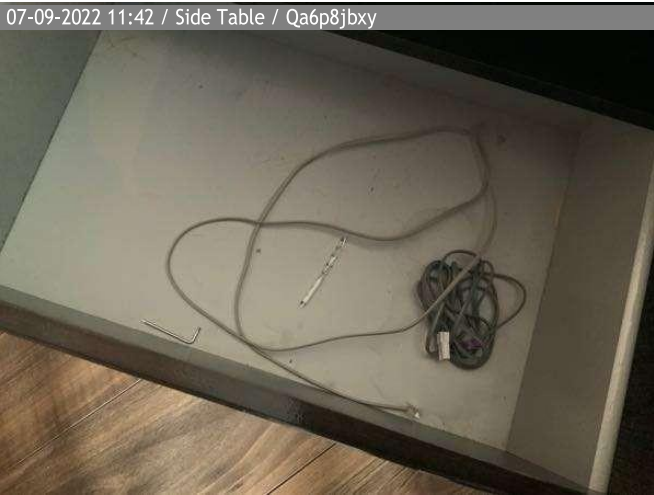
MOVE IN

13-09-2021 / Side Table / Rmxakomua



MOVE IN

07-09-2022 11:42 / Side Table / Qa6p8jbxxy



MOVE OUT

07-09-2022 11:43 / Side Table / 4e6l1hgkq



MOVE OUT

07-09-2022 11:42 / Side Table / Fkyjghj6p



MOVE OUT

TV unit

IN: Good condition

OUT: Good condition

Lounge continued



DVD player

IN: Not tested

OUT: Not tested



Lounge continued



Speaker

IN: Not tested

OUT: Not tested



Lounge continued



TV

IN: Not tested

OUT: Not tested



Lounge continued



Master Bedroom

Juliet doors

IN: Good condition and domestically clean OUT: Good condition and domestically clean

13-09-2021 / Juliet Doors / L5fo7l5bh



MOVE IN

07-09-2022 10:57 / Juliet Doors / Ryfe2c0qo



MOVE OUT

07-09-2022 10:58 / Juliet Doors / Y44v0ipfe / MAINTENANCE



MOVE OUT

Internal door

IN: Good condition

OUT: Good condition

13-09-2021 / Internal Door / Nnbif4qya



MOVE IN

Master Bedroom continued

07-09-2022 10:58 / Internal Door / Zu9blo878



MOVE OUT

Ceiling

IN: Good condition

OUT: Good condition

13-09-2021 / Ceiling / Ubs3ol6b1



MOVE IN

13-09-2021 / Ceiling / Lerudddyz



MOVE IN

13-09-2021 / Ceiling / 01s6t1sfg



MOVE IN

13-09-2021 / Ceiling / Yt6m280es



MOVE IN

Master Bedroom continued

07-09-2022 10:58 / Ceiling / 8qq4mgtc4



MOVE OUT

07-09-2022 10:59 / Ceiling / Qigb2s03v



MOVE OUT

07-09-2022 10:58 / Ceiling / 4f29ycet1



MOVE OUT

Walls

IN: Good condition

OUT: Good condition

13-09-2021 / Walls / Epbw2owoo



MOVE IN

13-09-2021 / Walls / To4cmpz1g



MOVE IN

Master Bedroom continued

13-09-2021 / Walls / 97pj51jke



MOVE IN

13-09-2021 / Walls / Fp2aouo41



MOVE IN

13-09-2021 / Walls / C8828tm6c



MOVE IN

07-09-2022 10:59 / Walls / Bgumb5fjo



MOVE OUT

07-09-2022 10:59 / Walls / Ar4qaju35



MOVE OUT

Master Bedroom continued

07-09-2022 10:59 / Walls / Krvlowtbz



MOVE OUT

07-09-2022 10:59 / Walls / 0vsndxyqa



MOVE OUT

07-09-2022 10:59 / Walls / F6z0nydo1



MOVE OUT

Woodwork

IN: Good condition

OUT: Good condition

13-09-2021 / Woodwork / l1et8d75g



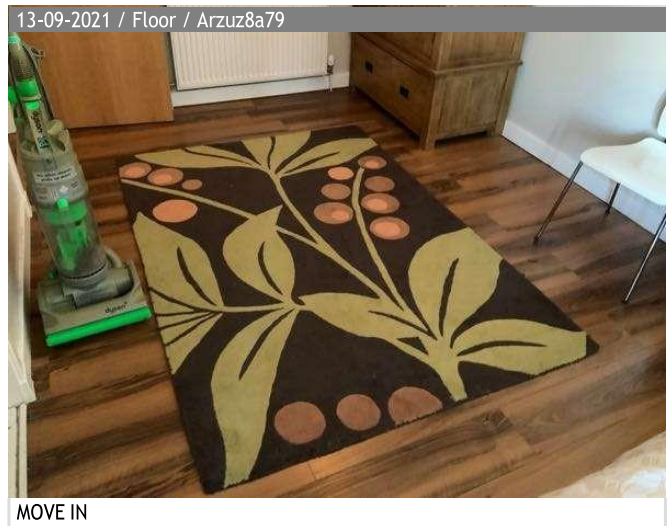
MOVE IN

Master Bedroom continued

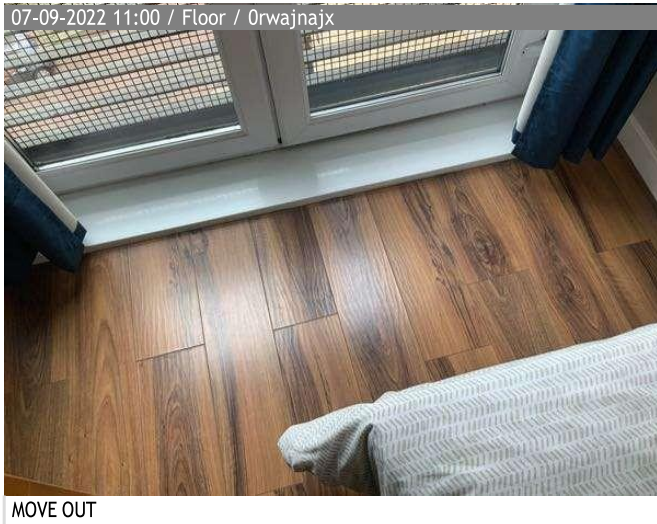


Floor

IN: Good condition and domestically clean OUT: Good condition and domestically clean



Master Bedroom continued



Mirror

IN: Good condition and domestically clean OUT: Good condition and domestically clean



Master Bedroom continued



Light switch

IN: In working order

OUT: In working order



Lighting

IN: In working order

OUT: In working order

Master Bedroom continued



Socket

IN: Not examined or tested

OUT: Not examined or tested



Master Bedroom continued



Heating

IN: Not examined or tested

OUT: Not examined or tested



Master Bedroom continued



MOVE OUT

Wall mounted speakers

IN: Not tested

OUT: Not tested



MOVE IN



MOVE IN



MOVE OUT



MOVE OUT

Window furnishings

IN: Good condition and domestically clean

OUT: Good condition and domestically clean

Master Bedroom continued

13-09-2021 / Window Furnishings /
1wzxyo200



MOVE IN

07-09-2022 11:02 / Window Furnishings
/ Zhwsx50mo



MOVE OUT

07-09-2022 11:02 / Window Furnishings
/ 3y7zowqa5



MOVE OUT

07-09-2022 11:02 / Window Furnishings
/ F2cfdcjma



MOVE OUT

07-09-2022 11:03 / Window Furnishings
/ Lrwknn5a2



MOVE OUT

Curtain pole

IN: Good condition

OUT: Good condition

Master Bedroom continued

13-09-2021 / Curtain Pole / T8dzosvx



MOVE IN

07-09-2022 11:03 / Curtain Pole / Heir7xkta



MOVE OUT

bedside drawers

IN: Fair wear and tear and domestically clean

OUT: Fair wear and tear and domestically clean

13-09-2021 / Bedside Drawers / Fzgg3t7bj



MOVE IN

13-09-2021 / Bedside Drawers / 7ux6mlvf5



MOVE IN

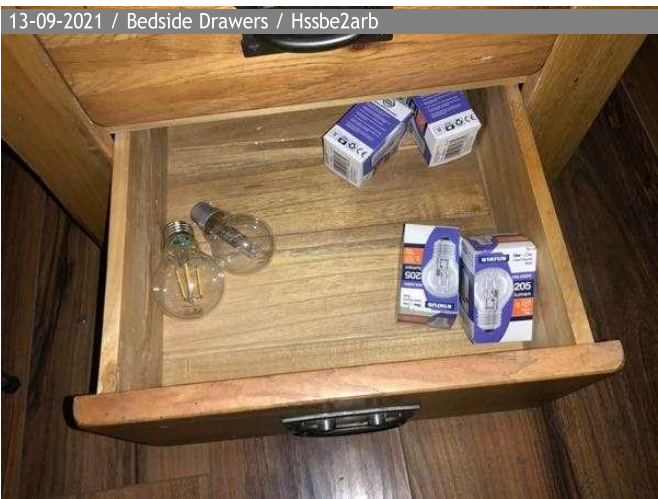
Master Bedroom continued



MOVE IN



MOVE IN



MOVE IN



MOVE IN



MOVE IN



MOVE IN

Master Bedroom continued

07-09-2022 11:04 / Bedside Drawers / Trb1rxxck



MOVE OUT

07-09-2022 11:04 / Bedside Drawers / Us3ft8k43



MOVE OUT

07-09-2022 11:04 / Bedside Drawers / Indeea3np



MOVE OUT

07-09-2022 11:04 / Bedside Drawers / Oqc27skyj



MOVE OUT

07-09-2022 11:06 / Bedside Drawers / I9p1zp130



MOVE OUT

07-09-2022 11:04 / Bedside Drawers / Tji3ij2kd



MOVE OUT

Master Bedroom continued



lamp

IN: Good condition and domestically clean OUT: Good condition and domestically clean



Master Bedroom continued



Bed Double

IN: Good condition and domestically clean OUT: Good condition and domestically clean



Chest of drawers

IN: Good condition and domestically clean OUT: Good condition and domestically clean



Master Bedroom continued

13-09-2021 / Chest Of Drawers / 7hsyh5oky



MOVE IN

13-09-2021 / Chest Of Drawers / Xf4rgur01



MOVE IN

07-09-2022 11:21 / Chest Of Drawers / Bpy1m4wnn



MOVE OUT

07-09-2022 11:21 / Chest Of Drawers / 9926jjm6i



MOVE OUT

07-09-2022 11:21 / Chest Of Drawers / J4ep6zmt5



MOVE OUT

07-09-2022 11:21 / Chest Of Drawers / 7puxi3o0u



MOVE OUT

Master Bedroom continued



clock

IN: Good condition

OUT: Good condition



Fitted wardrobe

IN: Good condition

OUT: Good condition

Master Bedroom continued

13-09-2021 / Fitted Wardrobe / S4mtpx3c1



MOVE IN

13-09-2021 / Fitted Wardrobe / Mz1ynl76f



MOVE IN

07-09-2022 11:22 / Fitted Wardrobe / 87s7wj7py



MOVE OUT

07-09-2022 11:22 / Fitted Wardrobe / Kwzj1dqbd



MOVE OUT

07-09-2022 11:22 / Fitted Wardrobe / Vqzeamhgx



MOVE OUT

07-09-2022 11:22 / Fitted Wardrobe / 4qsudzici



MOVE OUT

Mattress Double

IN: Good condition and domestically clean OUT: Good condition and domestically clean

Master Bedroom continued

13-09-2021 / Mattress Double / R4l1oqh6a



MOVE IN

13-09-2021 / Mattress Double / 8reqw1oah



MOVE IN

07-09-2022 11:08 / Mattress Double / V7csbaece



MOVE OUT

07-09-2022 11:08 / Mattress Double / 827d910jn



MOVE OUT

Wardrobe

IN: Good condition and domestically clean OUT: Good condition and domestically clean

13-09-2021 / Wardrobe / 3yno7ibl8



MOVE IN

13-09-2021 / Wardrobe / Ono3rwdnj



MOVE IN

Master Bedroom continued

13-09-2021 / Wardrobe / 04bai21mt



MOVE IN

07-09-2022 11:23 / Wardrobe / Bb4zthss4



MOVE OUT

07-09-2022 11:23 / Wardrobe / Mot9iq0q7



MOVE OUT

07-09-2022 11:24 / Wardrobe / B60laqfc9



MOVE OUT

07-09-2022 11:24 / Wardrobe / Hmiadfox1



MOVE OUT

DAB digital radio

IN: Not tested

OUT: Not tested

Master Bedroom continued



TV

IN: Not tested

OUT: Not tested



Master Bedroom continued



Terms and conditions

You are reminded that it is your responsibility at the beginning of the tenancy to note any specific discrepancies on the inventory that you do not agree with i.e. marks on walls, carpets, etc. Please sign every page. YOU MUST RETURN THE INVENTORY WITHIN 7 DAYS OTHERWISE WE UNDERSTAND THAT YOU AGREE WITH THE CONTENTS THROUGHOUT THE REPORT.

If no amendments are made, this inventory & schedule of condition will be regarded as a true record of the condition of the property and will be used to assess all damage for check-out purposes at the end of the tenancy.

An inventory is a report, which includes the internal condition of the property and an accurate description of the fixtures and fittings. It is compiled shortly before the commencement of the tenancy and checked at the termination for any dilapidations that may have accrued during the term of the tenancy.

Fair wear and tear allowance is taken into consideration for the full term. The guidelines set out below are intended to assist with the check out at the end of the tenancy and, if adhered to, should result in charges incurred, if any, being kept to a minimum.

Cleaning

Unless specifically stated in this Inventory & Schedule of Condition, the property is considered to be clean at the start of the tenancy. The property should be clean and tidy upon departure. A cleaning charge may be incurred if the property and, or fixtures and fittings, are left in an unsatisfactory state. Please ensure correct cleaning materials are used for different surfaces (bath, windows etc). Laminate flooring should be cleaned using a dry or slightly damp cloth/mop - water saturation will cause damage.

Carpets

You may be charged for cleaning any marks, stains etc and for part, or all, of the cost of damages.

Decoration

Fair wear and tear will be taken into consideration, however, you may be charged for tearing to wallpaper, blue tack marks, excessive chips to woodwork and plaster damage caused by pins, nails, screws etc being driven into walls and excess number of picture hooks. Light bulb/smoke alarm battery replacement is the responsibility of the tenant.

Ventilation

It is important to ensure that the property is adequately ventilated in order to avoid damage & staining from condensation.

Parking Areas

Please be aware that oil causes permanent staining and damage to certain to surfaces (especially tarmac). You may be charged for any damage or deterioration caused by leakage of oil onto surface areas.

Stored Items

Any items stored or moved during the tenancy must be returned to their original location, and where applicable, cleaned and ready for use. A charge will be made if boxed/stored items need to be returned to inventory location after you have left.

Keys

All keys to the property must be handed over to the agent prior to the inventory check out, or if the tenant is attending the check out appointment they must hand them over the agent attending.

THIS REPORT IS STORED ON COMPUTER AND THE ORIGINAL RETURNED TO YOU FOR SAFE KEEPING

Disclaimer

This inventory does not guarantee the safety of any equipment or contents and does not set out to do so.

A representative of AVJ Homes who is not a qualified surveyor or a qualified trades-person, or qualified to value the contents of the property has prepared this inventory.

This inventory relates only to the furniture and all the Landlords equipment and contents in the property. It is no guarantee, or report, on the adequacy of, or safety of, any such equipment or contents, merely a record that such items exist in the property at the date of preparing the inventory and the superficial condition of same.

FURNITURE AND FURNISHINGS (FIRE SAFETY) REGULATIONS 1988/1993

The fire and safety regulation regarding furnishings, gas, electrical and similar services are ultimately the responsibility of the instructing principal. Where the inventory notes "fire Regulation Label Attached" this should not be interpreted to mean the item complies with the "furniture and furnishings (fire) (safety) (amendments) 1993". It is a record that the item had a label as described or similar to that detailed in the "guide" published by the Department of Trade and industry January 1997 (or subsequent date). It is not a statement that the item can be considered to comply with the regulations.

USING THE INVENTORY

All static, loose or moveable items in this inventory are listed from left to right viewed from the doorway of that room.

Multiple items may be grouped together and may require locating.

Fixed items such as light switches, electrical sockets, telephone points, electric, blanking plates and fuse boxes are deemed serviceable and in place. Light fittings are assumed to come complete with a serviceable bulb(s) unless otherwise stated.

Any visible cracks to walls and ceilings will be documented and form part of this inventory.

At the point of check in the inventory will be recorded in correspondence to the fair wear and tear guide and the descriptions detailed below:

Tenant Declaration

I/We confirm that all information supplied throughout the above subsequent Check Out Report is fair and correct . I/We confirm that any issues noted have been discussed fully with the report preparer and that I/we have been advised that charges may be incurred for any agreed dilapidations. I/we have been made aware by the preparer that any issues noted may not necessarily be the responsibility of the tenant(s) as a result of wear and tear and other factors. I/we understand that it remains the responsibility of the tenant/Agent/Landlord to agree on any dilapidations from any issues arisen from this report before finalisation of the deposit return. If the property is rented to multiple tenant(s), only one tenant signature certifies the approval of all tenant(s).Please note that any advice given or comments made are for recommendation only and strongly recommend that if ever in doubt consult the scheme your deposit is held within consult your own advice from either the Citizens advice bureau or a legal advisor.

Tenant signature(s)

Name

Date

Clerk signature

Name

Date
