



LEADING LETTING & ESTATE AGENTS

AVJ Homes  
Letting & Estate Agents

279 Castlemilk Road  
Kingspark Glasgow G44 4LE

T 0141 649 8528 - 0141 649 3948

F 0141 530 2458

E sales@avjhomes.com

W www.avjhomes.com

Address line 1

Address line 2

Postcode

Date:

**RE:**

Dear Mr XXX

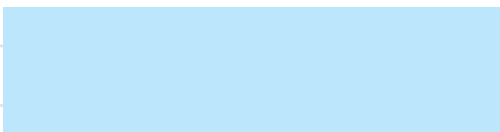
For the attention of UK visas and Immigration

We write to confirm that we have visited the above property on the 00/00/0000. The accommodation includes: a living room, kitchen, 4 bedrooms, 4 bathrooms, back garden and a front drive way, more information is in the floor plan attached.

We are of the opinion you that this property win be spacious enough for Mr.XXX and his wife XXX without it being over crowded.

If you need any further information, please feel free to contact us any time.

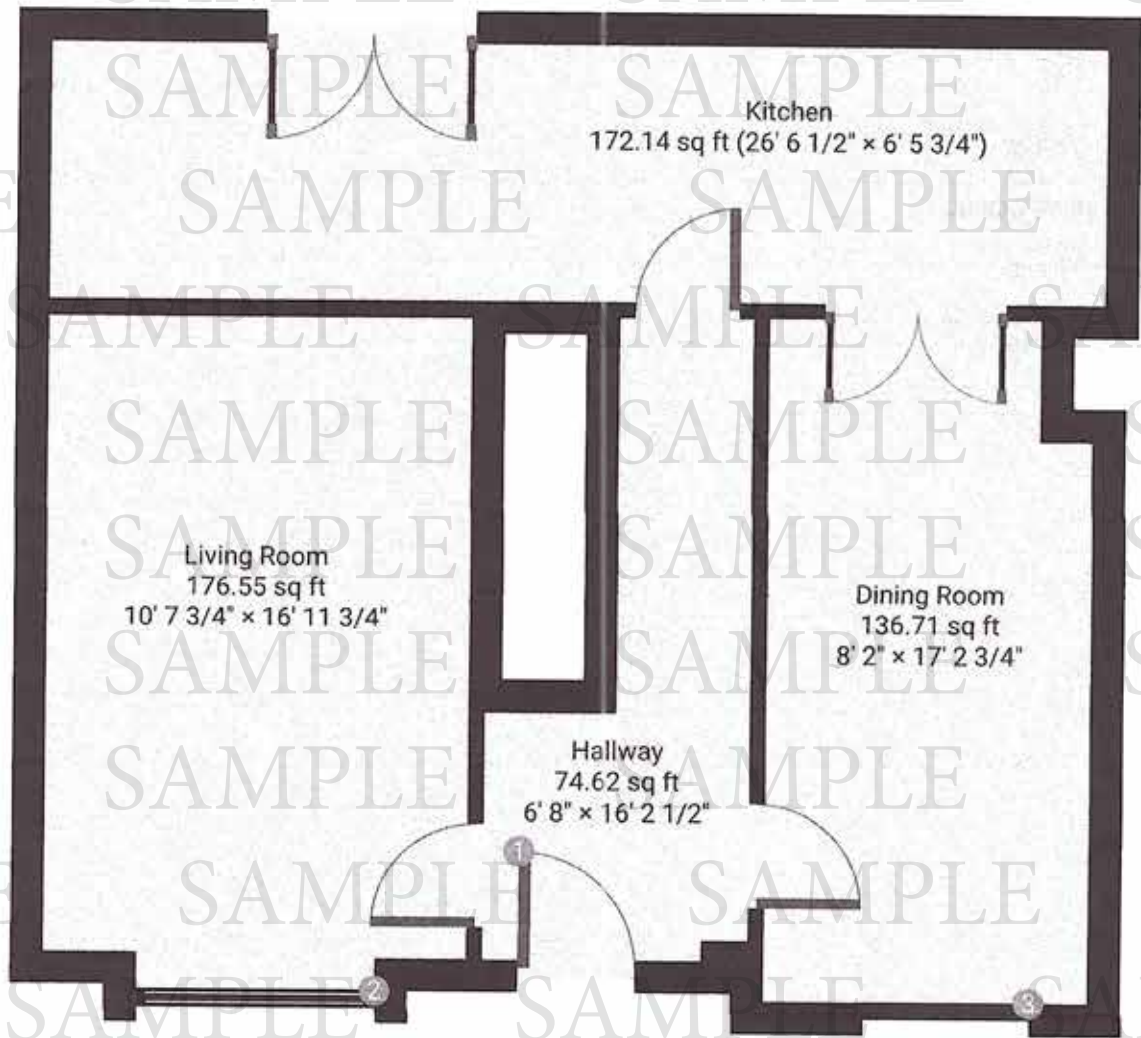
Yours Sincerely



Vijay Gindha

▼ **Ground Floor**

TOTAL AREA: 559.61 sq ft • LIVING AREA: 484.99 sq ft



TOTAL AREA: 1307.80 sq ft • LIVING AREA: 1067.29 sq ft • FLOORS: 2

▼ Ground Floor

① HINGED DOOR

Height  
6' 8 1/2"



② AWNING WINDOW

Height  
4' 4"

Distance to Floor  
2' 2 3/4"

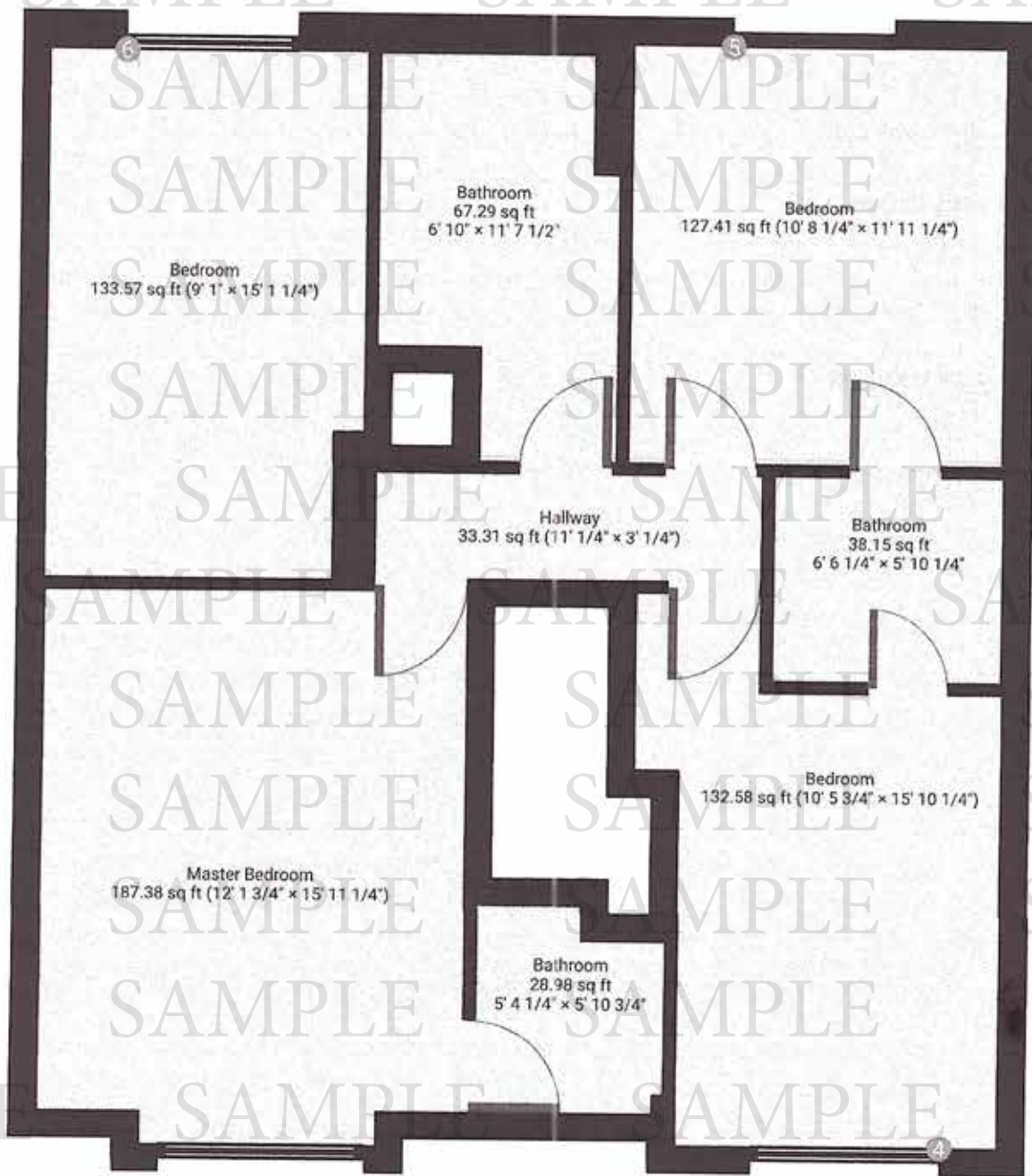


③ HUNG WINDOW

Height  
3' 6 1/2"

Distance to Floor  
1' 11 1/2"





THIS FLOORPLAN IS PROVIDED WITHOUT WARRANTY OF ANY KIND. SENSOPIA DISCLAIMS ANY WARRANTY INCLUDING, WITHOUT LIMITATION, SATISFACTORY QUALITY OR ACCURACY OF DIMENSIONS.

▼ 1st Floor

4 FIXED WINDOW

Height  
4' 6 3/4"

Distance to Floor  
2' 9"



5 HUNG WINDOW

Height  
3' 3 1/2"

Distance to Floor  
2' 8"



6 AWNING WINDOW

Height  
4' 2"

Distance to Floor  
3' 1/2"





TOTAL AREA: 1307.80 sq ft · LIVING AREA: 1067.29 sq ft · FLOORS: 2

▼ 1st Floor

● FIXED WINDOW

Height  
4' 6 3/4"

Distance to Floor  
2' 9"



● HUNG WINDOW

Height  
3' 3 1/2"

Distance to Floor  
2' 8"



● AWNING WINDOW

Height  
4' 2"

Distance to Floor  
3' 1/2"

